

# Manual

## Estranero Scent Diffuser



# 1

## Introduction

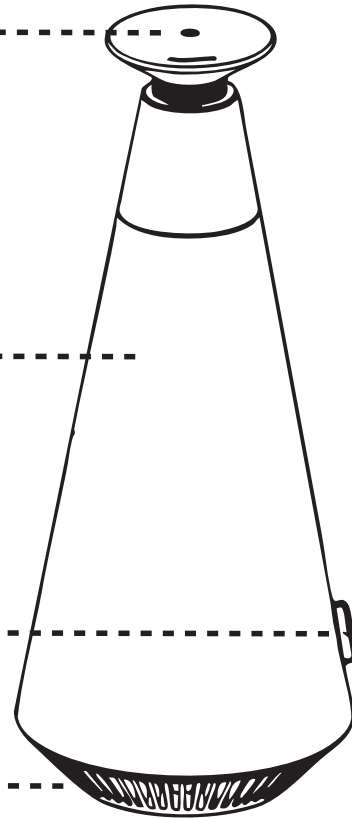
---

Dispensing Head

Base

Control Button

Indicator light



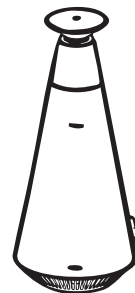
**Products and accessories  
in the package:**



Power plug



Power cord



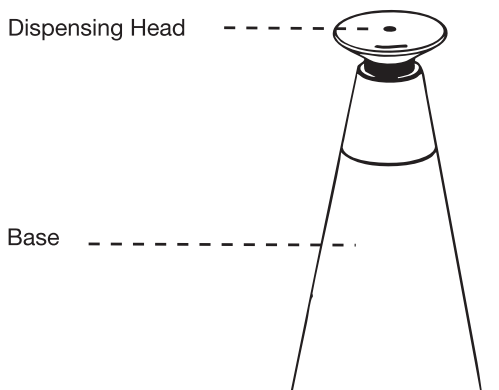

Device

## 2

## Function Description

---

The product uses an all-aluminum alloy body, equipped with a 2.5L flow air pump, and a 100ml essential oil bottle. The dispensing volume per hour is about 1.2g, the maximum power is 10W, and the diffusion range is 300 m<sup>3</sup>.

1. Click the “

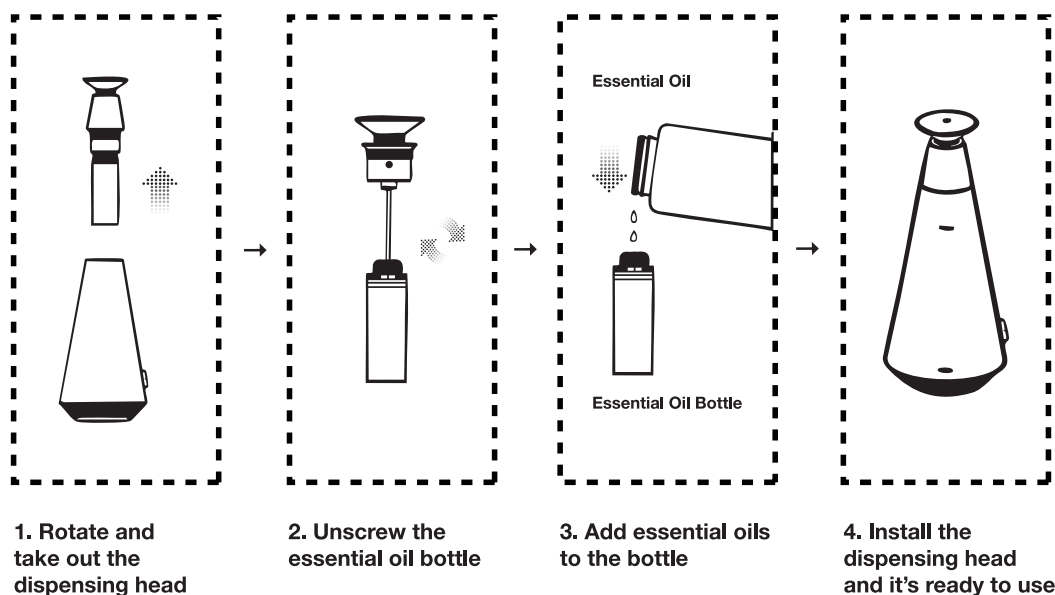
A line drawing of a conical diffuser. The top is a flat circular cap labeled 'Dispensing Head'. The main body is a cone. A horizontal dashed line across the middle is labeled 'Base'. Near the bottom, on the right side, is a small rectangular button labeled 'Control Button'. At the very bottom, a shaded area is labeled 'Indicator light'.

## 3

## Usage Method

---

The product uses an all-aluminum alloy base, equipped with a 2.5L flow air pump, and a 100ml essential oil bottle. The Dispensing volume per hour is about 1.2g, the maximum power is 10W, and the diffusion range is 300 m<sup>3</sup>.



---

### Instructions for using scent oils

1. Please turn off the device and wait for 2 minutes before adding essential oils again. Then, remove any remaining essential oils from the dispensing head.
2. It is recommended to use up the added essential oils within 45 days each time to prevent deterioration caused by oxidation.

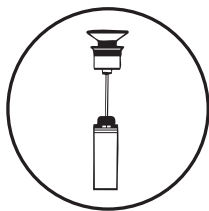
## 4

# Maintenance

---

In order to ensure the best fragrance diffusion effect, customers are requested to inspect and maintain the equipment every six months. When new fragrance types need to be replaced or the fragrance diffusion is weakened, the equipment should also be maintained.

-----



**1. Remove the dispensing head and unscrew the essential oil bottle.**



**2. Pour an appropriate amount of alcohol into the essential oil bottle and clean it.**



**3. After cleaning, pour a small amount of alcohol, attach the essential oil bottle to the device, turn on the device, and work for 5-8 minutes.**



**4. After the device is cleared, turn off the power.**



Livingroom



Study



Office

## 5

## Parameters

---

Product Name	Estranero	Product Type	Diffuser
Product Type	Desktop Diffuser	Product Size	φ135*300mm
Maximum Power	10W	Net Weight	1.5kg
Input Power	DC5V-2A (Tyce C)	Overall Weight	2kg
Coverage	Up to 800ft	Packing List	Device + Power plug + Power cord
Battery Capacity	5000MAH	Machine Noise	≤30dB
Oil Bottle Capacity	100ML		

## 6

## Troubleshooting

---

Please follow the instructions below to troubleshoot and attempt basic repairs before requesting a return for factory servicing.

Fault Type	Method of Execution
The Device is Not Working.	Please check the power adapter is DC5 V-1A and the DC end has been correctly inserted. Is the designed working program of the device currently within the working time range?
No Dispensing, Minimal Dispensing.	Is the air pump working? Is there airflow at the dispensing core located in the center of the outlet? Is the oil suction pipe loose or blocked? Is the air nozzle sealing ring deformed or damaged and falling off?
Oil Leakage.	Check whether the essential oil bottle and dispensing head are securely tightened, and whether the sealing ring on the dispensing head is deformed or damaged.
Abnormal Noise.	Check if the air pump is loose and secure it in place. If the air pump is damaged, it should be replaced with a new one.

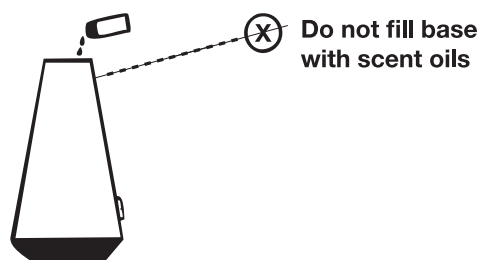
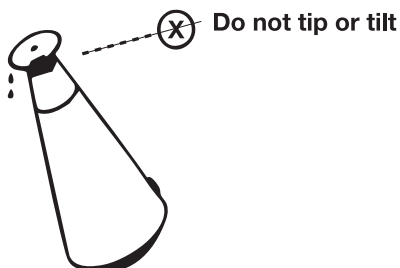


## 7

## Safety Precautions

---

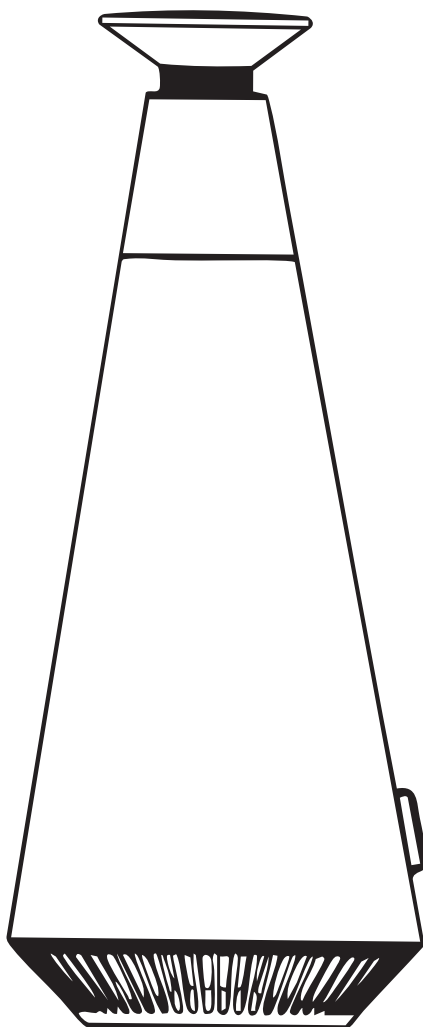
- Do not use overloaded power sockets, damaged cables, or faulty adapters, as they may pose a fire risk or endanger your safety. Replace any damaged components immediately.
- Unless you are a qualified technician, do not attempt to modify, disassemble, or repair the device yourself. Improper handling may cause damage to the equipment.
- If the device malfunctions, first ensure it is being used according to the standard operating instructions. You can also refer to the troubleshooting guide.
- If the issue persists and cannot be resolved, please contact the seller or authorized service provider promptly.
- When adding essential oils, please do not drop essential oils into the device, and the device may not be turned upside down or tilted when in use.
- If the equipment needs to be transported to other locations, please maintain and clean the equipment (see Equipment Maintenance for details) before packaging and transporting to avoid essential oil penetration and damage to the equipment.
- Please clean and maintain the equipment regularly to ensure that the equipment remains in optimal working condition.





## Attention

Overfilling the essential  
oil bottle may damage  
the product



Atriani.com